



Low Light Risk Mitigation with a rifle

WHEN: March 17th,
2025

WHERE: CORONA PD
RANGE

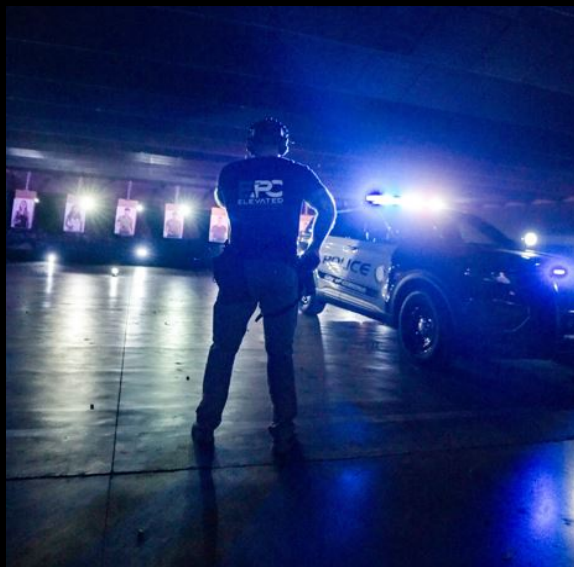
COURSE FEE: \$275
****LE ONLY DUE TO
RANGE POLICY****



A patrol rifle should always have a light with the capability to push light at rifle engagement distances. In this course, we will be discussing proper light/mount/switch selection, connection to the rifle, activating the WML, handheld techniques with the the rifle, reloads in low light, rifle to pistol transitions, shooting around barricades and more. Decision making drills & how to use light to control subjects will also be explored. At the end of the course, students will be able to choose a proper light/lighting technique for various environments and situations to mitigate their risk and reduce liability.

About EPC:

EPC is owned and operated by a current full time LEO of 16 years who is a post certified firearms instructor. Each course has a minimum of 3 instructors all of which are full time cops and POST certified instructors. For a complete bio of each instructor, please visit the "about EPC" on our website.



Required equipment:

- Patrol rifle with WML
- Handheld flashlight (bring multiple)
- Duty pistol & belt w/ mag pouches & holster
- Spare batteries for lights
- Minimum of 3 rifle & handgun magazines
- Eye/ear protection
- 500 rounds of rifle ammo
- 150 rounds pistol ammo